

Farm

Writing Worksheets

For

Kindergarten

All rights reserved. No part of this packet may be reproduced, stored in a retrieval system, or transmitted in any form by any means— electronic, mechanical, photocopy, recording or otherwise— without prior permission of the publisher, except as provided by U.S. copyright law.

YOU MAY

- Use these files for personal use ONLY.
- Download the files to your personal computer.
- Print as many copies as you would like.

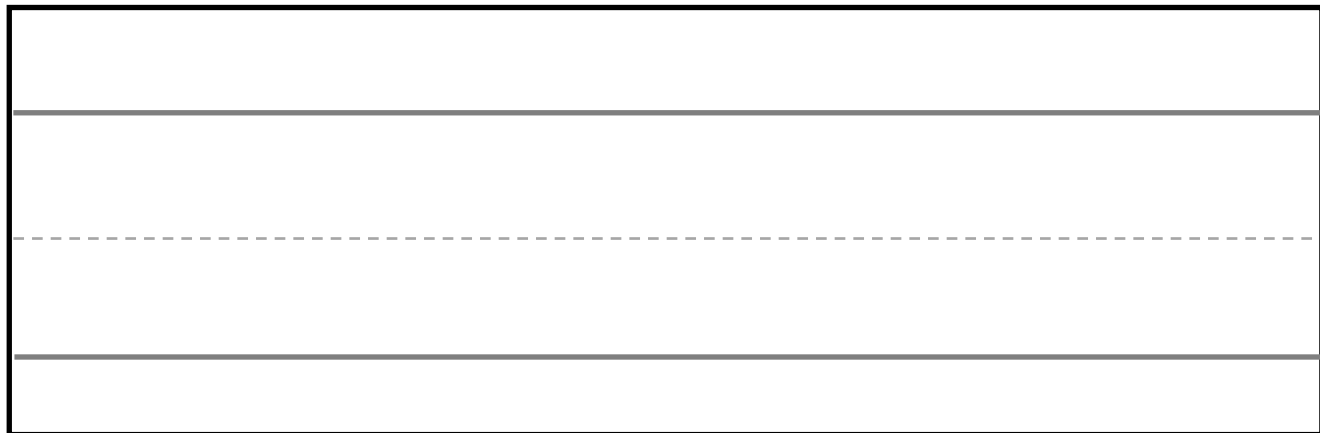
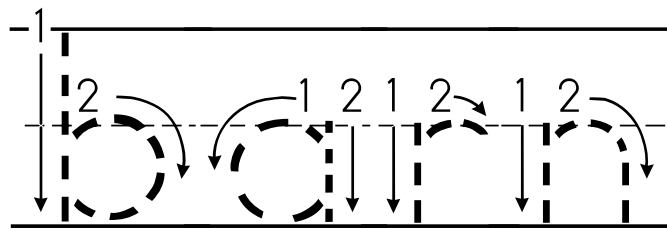
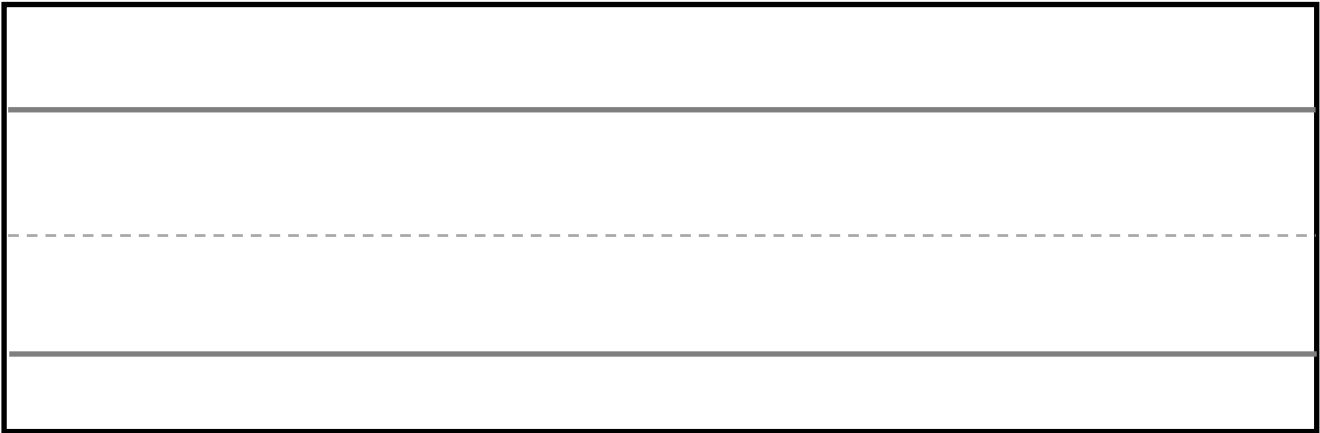
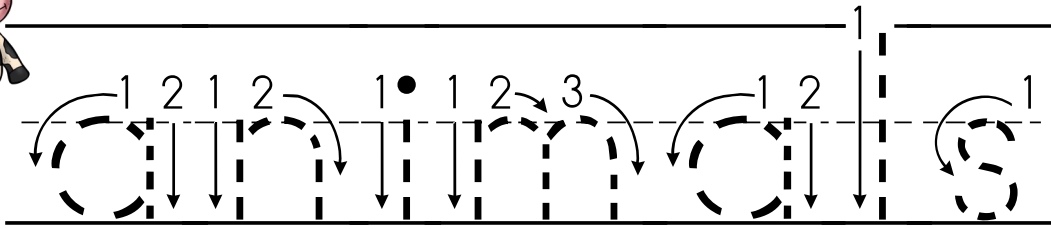
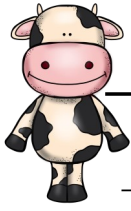
YOU MAY NOT

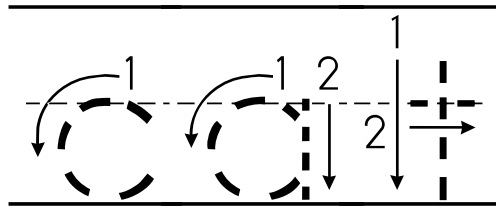
- Edit any of the printables.
- Share my files with anyone else.
- Store them on any website or forum.
- Claim them as your own.
- Print and sell/distribute to others.

Clipart c/o [Edu-Clips](#)

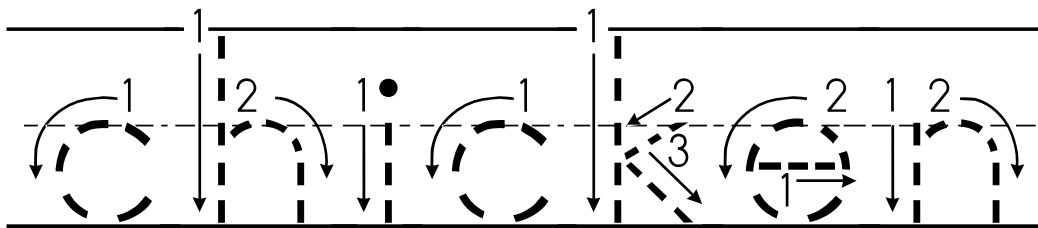
Questions or concerns? Contact me at
learning2walkblog@gmail.com



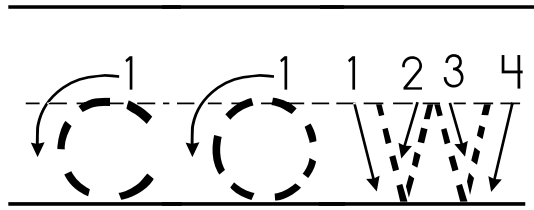




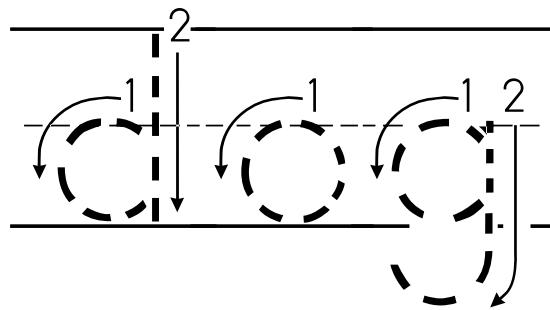
Blank handwriting practice lines for the letter 'c' and 'i'. The lines consist of a solid top line, a dashed middle line, and a solid bottom line.



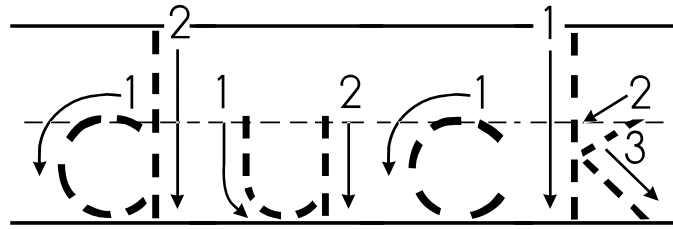
Blank handwriting practice lines for the words 'cin' and 'in'. The lines consist of a solid top line, a dashed middle line, and a solid bottom line.



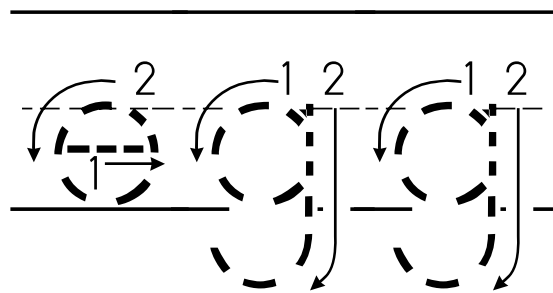
Blank handwriting practice lines consisting of a solid top line, a dashed middle line, and a solid bottom line.



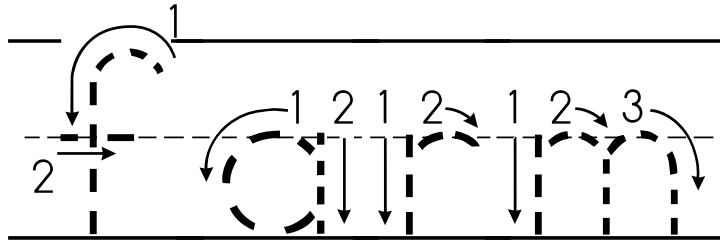
Blank handwriting practice lines consisting of a solid top line, a dashed middle line, and a solid bottom line.



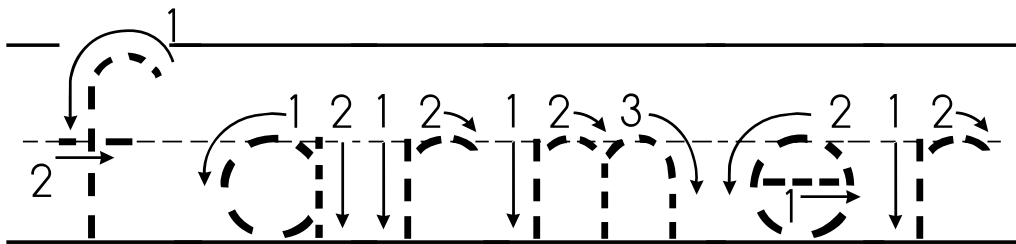
Blank handwriting practice lines consisting of a solid top line, a dashed middle line, and a solid bottom line.



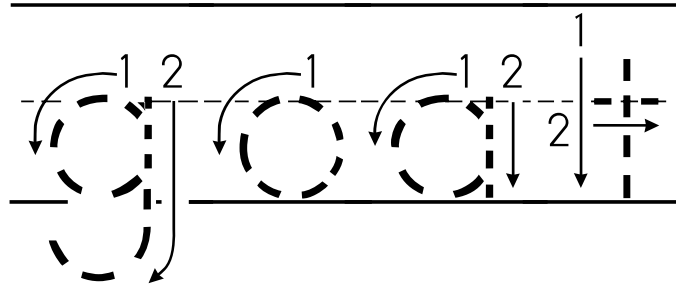
Blank handwriting practice lines consisting of a solid top line, a dashed middle line, and a solid bottom line.



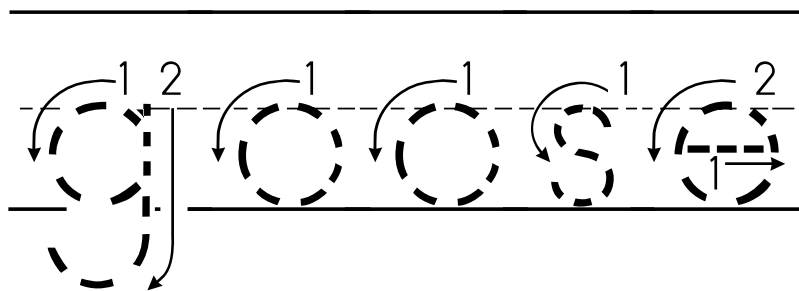
Blank handwriting practice lines for the first section, consisting of a solid top line, a dashed middle line, and a solid bottom line.



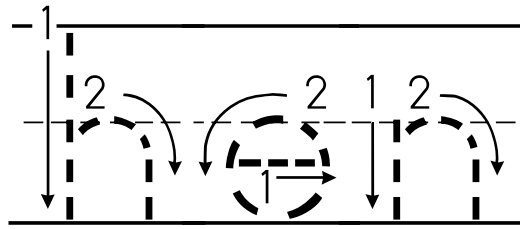
Blank handwriting practice lines for the second section, consisting of a solid top line, a dashed middle line, and a solid bottom line.



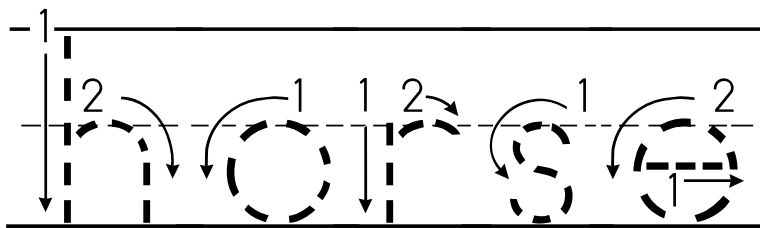
Blank handwriting practice lines for the first section, consisting of a top solid line, a middle dashed line, and a bottom solid line.



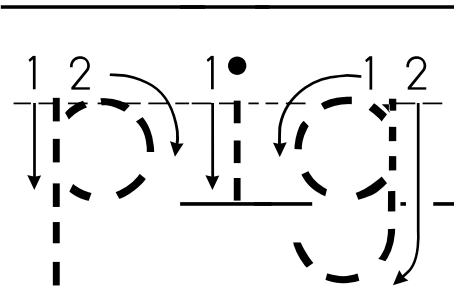
Blank handwriting practice lines for the second section, consisting of a top solid line, a middle dashed line, and a bottom solid line.



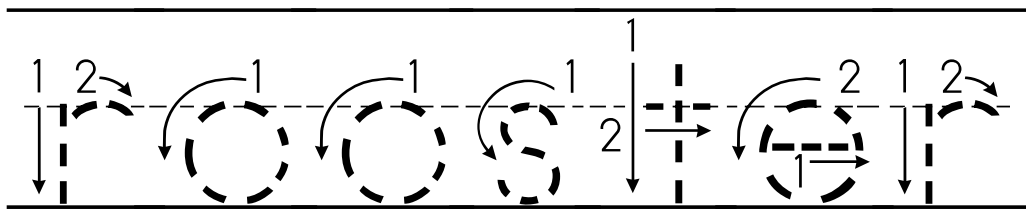
Blank handwriting practice lines consisting of a top solid line, a middle dashed line, and a bottom solid line.



Blank handwriting practice lines consisting of a top solid line, a middle dashed line, and a bottom solid line.



Blank handwriting practice lines with a dashed midline for tracing.



Blank handwriting practice lines with a dashed midline for tracing.